



# GAT MONTHLY MEMBERSHIP PROGRESS REPORT

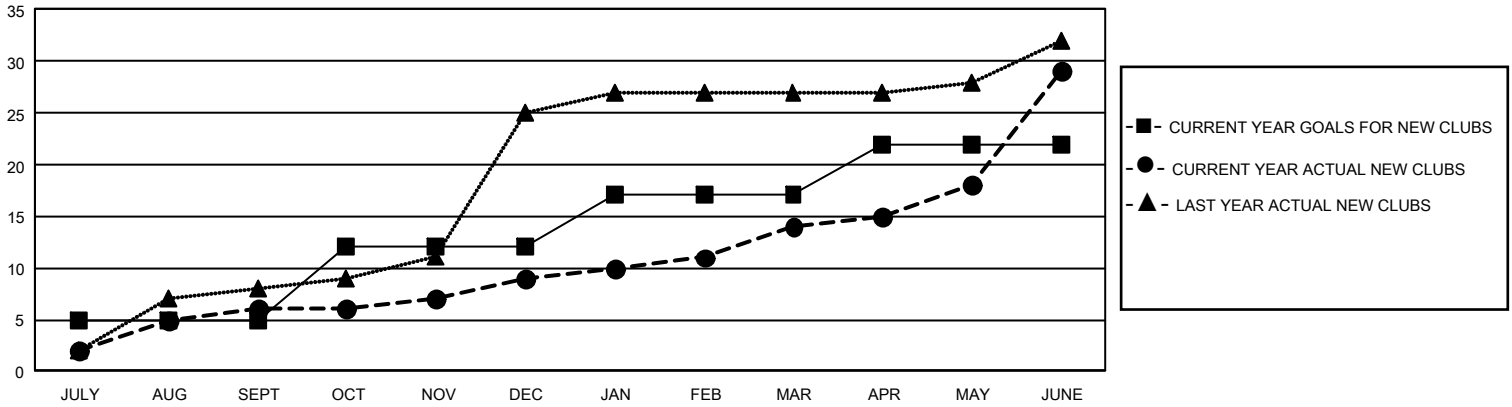
Results as of: 6/30/2022

## GMT Constitutional Area 3, Group D

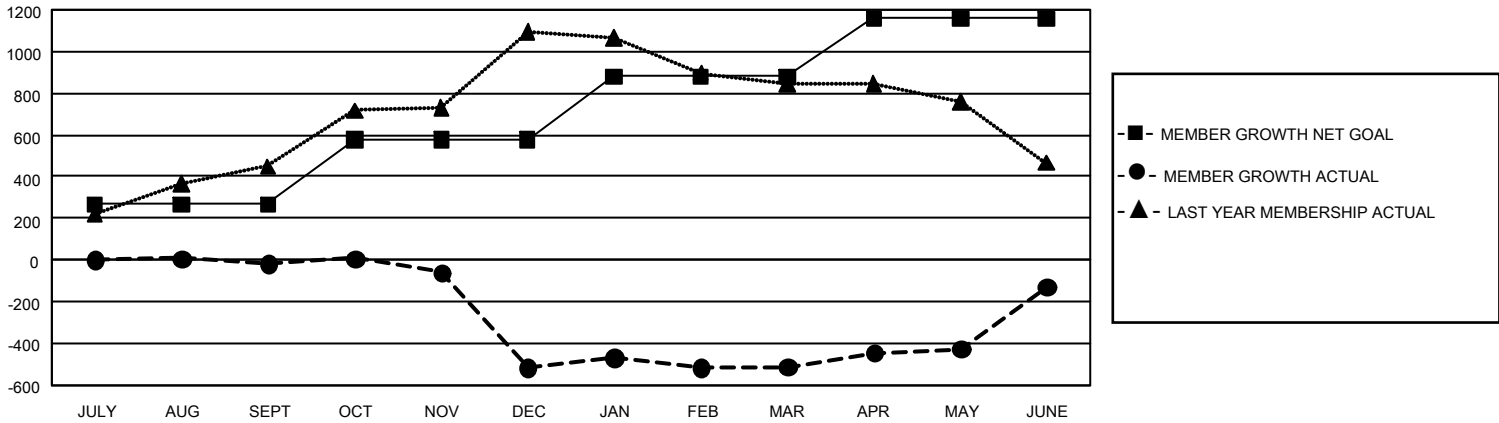
REPORT DOES NOT INCLUDE CLUBS IN UNDISTRICTED AREAS.

Clubs				Members			
RESULTS FOR 2021-2022				RESULTS FOR 2021-2022			
QUARTER	NEW CLUB GOAL	NEW CLUBS	DROPPED CLUBS	QUARTER	MEMBER GROWTH NET GOAL	MEMBER GROWTH ACTUAL	DROPPED MEMBERS ACTUAL (including transfers)
JULY/AUG/SEPT	15	6	9	JULY/AUG/SEPT	266	589	578
OCT/NOV/DEC	21	3	9	OCT/NOV/DEC	313	582	989
JAN/FEB/MAR	15	5	7	JAN/FEB/MAR	301	351	306
APR/MAY/JUNE	15	15	1	APR/MAY/JUNE	278	1,276	822

GOALS AND ACTUAL NEW CLUBS CUMULATIVE



GOALS AND ACTUAL MEMBERS CUMULATIVE



DROPPED CLUBS: 26	415 CLUBS OF 599 ADDED 1 OR MORE NEW MEMBERS	<u>GENDER DISTRIBUTION</u>	
<u>DROPPED MEMBERS</u>		MALE	5,449 (44.47%)
DECEASED	135	FEMALE	6,801 (55.50%)
CLUB CANCELLED	349	NON BINARY	0 (0.00%)
OTHER	2,187	PREFER NOT TO ANSWER	4 (0.03%)
<b>TOTAL</b>	<b>2,671</b>	TOTAL FAMILY UNIT MEMBERS	4,367
	<a href="#">CLICK HERE FOR CUMULATIVE MEMBERSHIP DATA</a>	FAMILY MEMBERS PAYING HALF DUES	2,539